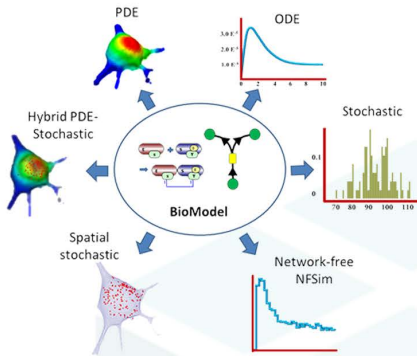




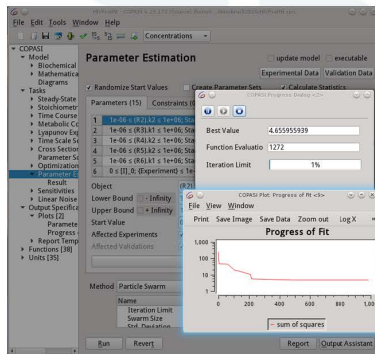
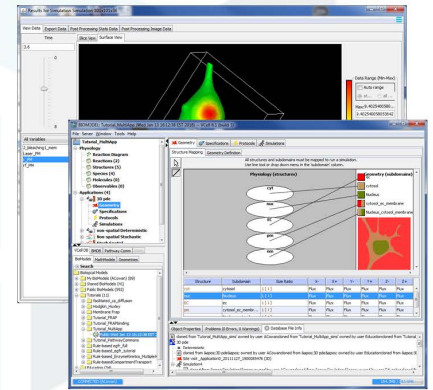
21st Annual Workshop Computational Cell Biology August 3-5, 2020



The 21st Annual Workshop on Computational Cell Biology will be sponsored by the Center for Cell Analysis and Modeling (CCAM) at the University of Connecticut School of Medicine on August 3-5, 2020. This is an intense hands-on course designed to enable cell biologists and biophysicists to develop models of their experimental system using Virtual Cell, COPASI, and SpringSaLaD software systems.

Course Description

The course will consist of 1/2 day of introductory lectures presented by the developers of the three software platforms. The remaining 2.5 days will consist of continuous interactive, hands-on sessions using the software for developing models and performing simulations. The course will be limited to about 12 people to allow for extensive one-on-one teaching sessions and to promote in-depth scientific discussions among the participants and instructors. Course instructors will include Michael Blinov, Ann Cowan, Leslie Loew, Pedro Mendes, Ion Moraru, Masoud Nickaen, and Boris Slepchenko.

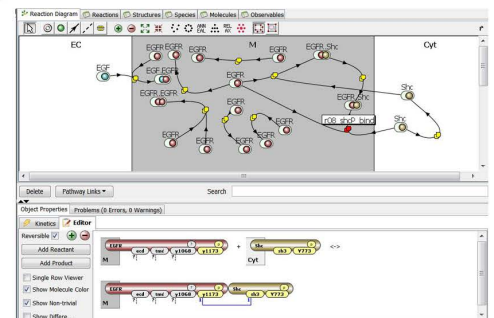


How to Apply for the Course

To apply for the course you are asked to submit a 1-2 page proposal outlining your project and including the title and period of your NIH grant. This will allow us to determine if the current implementations of the Virtual Cell, COPASI or SpringSaLaD are applicable to your project. Please email your short proposal by June 15, 2020 to Dr. Leslie Loew: les@uchc.edu. There is no registration fee for this course and CCAM will provide all meals; however, you will be responsible for travel and hotel costs. We hope you will be able to join us and please pass the word along to your cell biology colleagues.

Additional Information

For more information on the Virtual Cell, COPASI and SpringSaLaD Software and their capabilities, please visit our web sites at <http://vcell.org>, <http://copasi.org>, and <https://vcell.org/ssalad> which have extensive tutorials and example models.



Contact

Karen Zucker
860-679-1452
zucker@uchc.edu

